

**CAME**  
safety&comfort

*parkare*

GLOBAL | PARKING | SOLUTIONS

# CONTENTS

- 3 PRODUCT SELECTION GUIDE
- 4 ELEGANCE
- 12 COMPACT
- 18 PS ONE
- 24 OPTIMA PARKING GUIDANCE SYSTEM
- 26 PRE-BOOKING & ONLINE PAYMENTS
- 28 TEMPO
- 32 TEMPO ENTERPRISE SOFTWARE
- 33 CLOUD SERVICES
- 34 SERVICE & AFTERCARE
- 36 CONTACT INFORMATION

# PRODUCT SELECTION GUIDE

In 2014 Parkare - the parking technology and parking meter specialist - was acquired by CAME Group, joining the two groups, both of which boast proven track records in the power-driven operator and parking system management sectors, not to mention keen service oriented approaches and solid technical reputations thanks to their very active research and development efforts. Our systems include:

	OFF STREET PARKING	ON STREET PARKING
ENTRY LEVEL	<p><b>COMPACT - p12</b></p> <ul style="list-style-type: none"> <li>✓</li> <li>🌐</li> <li>🔒</li> <li>⚙️</li> <li>🌐</li> <li>🔗</li> <li>📄</li> </ul> <p>Ticket transporterless system</p> 	<p><b>TEMPO - p28</b></p> <ul style="list-style-type: none"> <li>✓</li> <li>🌐</li> <li>🔒</li> <li>⚙️</li> <li>🔗</li> <li>🕒</li> <li>📄</li> <li>📄</li> <li>🌐</li> </ul> 
HIGH END	<p><b>ELEGANCE - p4</b></p> <ul style="list-style-type: none"> <li>✓</li> <li>🌐</li> <li>🔒</li> <li>⚙️</li> <li>🕒</li> <li>🔗</li> <li>📄 &amp; 📄</li> </ul>  <p><b>PS ONE - p18</b></p> <ul style="list-style-type: none"> <li>✓</li> <li>🌐</li> <li>🔒</li> <li>⚙️</li> <li>🌐</li> <li>🔗</li> <li>📄</li> </ul> 	<p><b>TEMPO ENTERPRISE SOFTWARE - p32</b></p>  <ul style="list-style-type: none"> <li>✓</li> <li>🌐</li> <li>🔒</li> <li>⚙️</li> </ul>

### SYMBOL KEY

✓ EASY TO USE	🔒 SECURE	⚙️ CUSTOMISABLE	🔗 RELIABLE
🌐 VERSATILE	📄 SCALABLE	🕒 ROBUST	🕒 FAST
📄 BARCODE TICKET	📄 MAGSTRIPE TICKET	📄 PRINTED BARCODE TICKET	📄 PRINTED TICKET

# ELEGANCE

## PAY-ON-FOOT OFF STREET PARKING SYSTEM

### FOR LARGE COMPLEX PARKING APPLICATIONS

The ELEGANCE system is a comprehensive solution to parking control, offering significant improvements in parking productivity for little additional cost, whilst also increasing end user satisfaction due to operational reliability and the range of products to meet all requirements. To do this, our ELEGANCE car park control system is based on a network of automatic devices that regulate access, control payment and record all activity in the car park.

- Reduction in parking operating costs.
- Complete adaptation to the specific requirements of the car park (number of spaces, turnaround, payment methods, etc.).
- Integrated system that facilitates installation, handling and maintenance of the car park.
- Remote and centralised control of the entire car park system.
- Automatic recording of all parking events for accounting and/or auditing purposes.
- Possibility of integration with third-party solutions.



**PRICES FOR ELEGANCE ARE AVAILABLE UPON REQUEST:** every ELEGANCE project has to be analysed together with our sales team. Kindly let us have your project details so we can provide you with a specific quotation.



## ELEGANCE SYSTEM COMPONENTS

### AUTOMATIC PAY STATIONS

Straightforward, fast and easy to use, the Elegance Pay Stations keep customers on the move. Clearly indicated multiple payment options, 4-way ticket reading and a high change capacity in both coins and optionally notes means the machines operate well in any environment.

Pre-paid cards can be used at our Pay Stations from where they may be 'topped up' with value.

The Elegance range is built to the highest standards and offer excellent security. This standard extends to our exceptionally high level of customer service. We offer tailor made maintenance service to cater for specific customer needs. LX16 is part of our low maintenance high performance modular car parking solutions system, used in conjunction with the LX15 and LX17.



### LX16 PAY STATION

#### FEATURES

- Single Magnetic Ticket Reader/Encoder used for both tickets and pass cards.
- Side or centre stripe reading.
- Accepts up to 14 different coin values.
- 4 hoppers for coin recycling, storage and change giving. Each hopper can store up to approximately 1,000 coins depending on coin type.
- Thermal printer for receipts and cashbox/Notebox audits
- Multilingual information display with 12" TFT monitor
- Solid state single board computer – Microsoft® Windows® XP embedded operating system
- Network capability – TCP/IP Ethernet IEEE 802.3
- Intercom speaker
- UPS to enable the pay station to complete operations in progress in the event of a power supply failure
- Polyester powder painted and oven-dried mild steel housing

#### OPTIONAL COMPONENTS

- Credit/Debit card payment via Chip & PIN.
- Banknote reader, accepting upto 13 different note types in any direction
- Coin hopper replenishment from secure recharge canisters. Each canister holds approximately 500 coins
- Side or centre stripe ticket options
- Recycling & re-printable Smart Cards instead of tickets

#### SPECIFICATIONS

- Power: 115 or 230 Vac
- Supply: 6A ac
- Frequency: 50 or 60 Hz
- Consumption 400 w
- Temperature: -20°C to +55°C.
- Height: 1500 mm
- Width: 975 mm
- Depth: 590 mm

### LX08 CASHLESS PAY STATION

#### FEATURES

- Single Magnetic Ticket Reader/Encoder used for both tickets and pass cards.
- Side or centre stripe reading.
- Credit/Debit card payment via Chip & PIN
- Thermal printer for receipts
- Multilingual information display with 12" TFT monitor
- Solid state single board computer – Microsoft® Windows® XP embedded operating system
- Network capability – TCP/IP Ethernet IEEE 802.3
- Intercom speaker
- UPS to enable the pay station to complete operations in progress in the event of a power supply failure
- Polyester powder painted and oven-dried mild steel housing

#### SPECIFICATIONS

- Power: 115 or 230 Vac
- Supply: 6A ac
- Frequency: 50 or 60 Hz
- Consumption 250 w
- Temperature: -20°C to +55°C.
- Height: 1756 mm
- Width: 490 mm
- Depth: 506 mm

## ELEGANCE SYSTEM COMPONENTS

### LX15 ENTRY TERMINAL | LX17 EXIT TERMINAL

Simple, straightforward and easy to use – Elegance ticket issue and reader machines are designed with users in mind. With an intuitive design and user-friendly LCD display, the machines operate quickly and efficiently to maximise traffic flow through the car park.

As you'd expect from Parkare, the technology powering the machines is advanced and robust, and the customer service promise is exceptional. LX15 and LX17 are part of our low maintenance high performance modular car parking solutions system that can be adapted to changes in your business. Flexibility is part of our core offer, and we'll guarantee to keep your parking system working efficiently for you. Options include pass-card acceptance using either magnetic stripe or proximity card technology.

#### FEATURES

- Single Magnetic Ticket Reader/Encoder used for both tickets and pass cards.
- Side or centre stripe reading.
- Automatic or manual ticket issue\*
- 5,000 fan folded ticket capacity with low ticket detection\*
- User friendly LCD display
- Multiple language selection
- Solid state single board computer – Microsoft® Windows® XP embedded operating system
- Network capability – TCP/IP Ethernet IEEE 802.3
- Single loop vehicle presence detection
- Intercom speaker
- Thermostatically controlled internal heating
- Polyester powder painted and oven-dried mild steel housing

#### OPTIONAL COMPONENTS

- Proximity card readers
- Recycling & re-printable Smart Cards instead of tickets

#### SPECIFICATIONS

- Power: 115 or 230 Vac
- Supply: 3A ac
- Frequency: 50 or 60 Hz
- Consumption 270 w
- Temperature: -20°C to +55°C
- Height: 1155 mm
- Width: 490 mm
- Depth: 439 mm

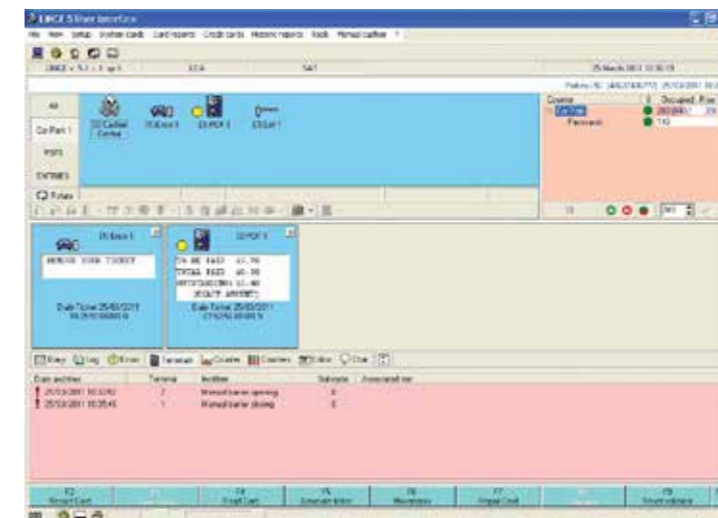


### LX20 EXIT CENTRAL MANAGEMENT SYSTEM

The LX20 central management system gives you the capability to monitor single or multiple car parks remotely. Real time monitoring alongside event and transaction logging delivers efficient control from one centre.

The LX20's advanced statistical analysis and comprehensive reporting functions delivers valuable business information with ease and flexibility and can adapt to your business needs.

Investing in innovation in car parking software and hardware means we're always looking ahead to offer our clients the very latest integrated technology.



Lynx software management system

For further information please visit [www.cameparkare.co.uk](http://www.cameparkare.co.uk)

\* Only applicable to the LX15

### LX18 CASHIER TERMINAL

The central monitoring computer with an option for a cashier facility is used to manage the wide range of Parkare parking systems.

#### FEATURES

- TFT monitor
- Ticket and season card reader/validator
- UPS to allow continued operations during a power failure and safe shut-down
- Latest generation PC computer
- Network capability - TCP/IP Ethernet IEEE 802.3

#### OPTIONAL COMPONENTS

- Cash drawer
- Customer display
- Credit card payment
- Damage and lost tickets payment
- Remote monitoring diagnostic functionality
- ADSL modem/router with VPN configuration for multiple car park installations

#### SPECIFICATIONS

- Power: 115 or 230 Vac
- Frequency: 50 or 60 Hz
- Consumption 400w
- Temperature: +10°C to +40°C

## ELEGANCE SYSTEM COMPONENTS

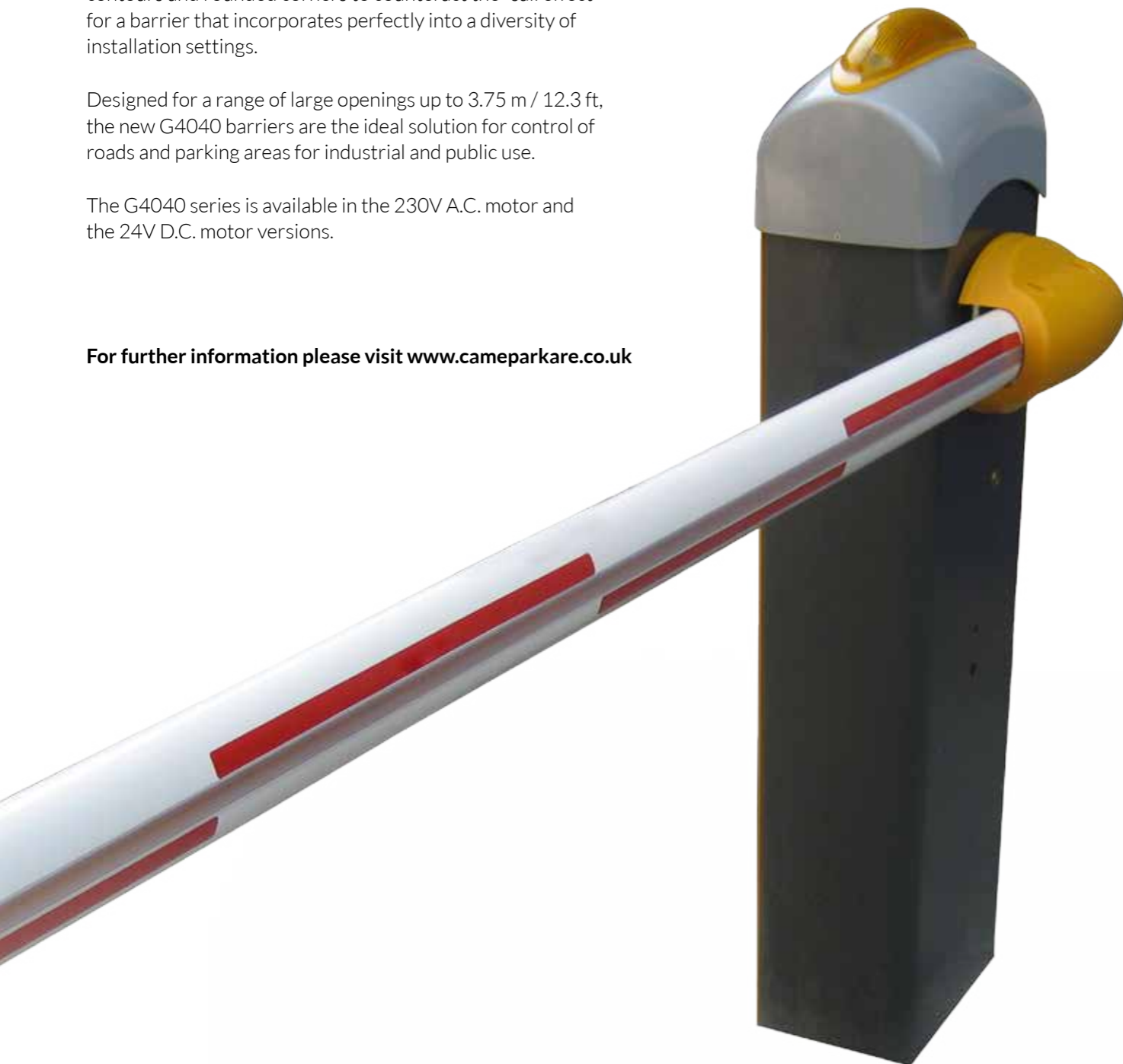
### G4040 RISING ARM BARRIER

Innovation and design for all-inclusive safety: these are the most recent additions to the G4040 barrier line family. Soft contours and rounded corners to counteract the “sail effect” for a barrier that incorporates perfectly into a diversity of installation settings.

Designed for a range of large openings up to 3.75 m / 12.3 ft, the new G4040 barriers are the ideal solution for control of roads and parking areas for industrial and public use.

The G4040 series is available in the 230V A.C. motor and the 24V D.C. motor versions.

For further information please visit [www.cameparkare.co.uk](http://www.cameparkare.co.uk)



#### FEATURES

- An electronic contact automatically interrupts the power supply voltage as soon as the inspection door is opened.
- Round tubular bar for maximum reduction of the sail effect ensuring correct functioning even in areas subject to high winds.
- Luminous cord offering superior visibility of the arm and maximum durability of the light fixtures.
- Differentiated sensitivity spring for exceptional balancing of the bar.
- Command electronics. Protected by a die-cast aluminium guard, it is positioned to make any type of intervention extremely practical.
- The safety photocells are affixed directly to the barrier body without affecting the aesthetics of the product.
- Polyester powder painted and oven-dried mild steel housing

#### OPTIONAL COMPONENTS

- Emergency stop feature by a photocell or pressure strip
- UPS to continue operating when mains supply fails (max. 100 cycles)
- Boom lighting

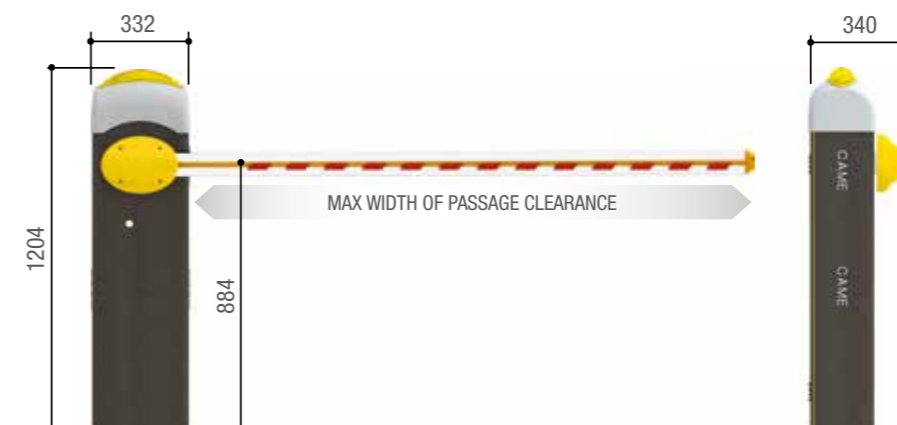
#### SPECIFICATIONS

- Protection Rating (IP): 54
- Power Supply (V - 50/60 Hz): 230 AC
- Motor Power Supply (V): 24 DC
- Current Draw (A): 15 Max
- Opening time at 90° (s): 2 ÷ 6
- Duty Cycle (%): INTENSIVE SERVICE
- Torque (Nm): 600
- Operating Temperature (°c): - 20 / + 55

#### MAX. OPENING CLEARANCE

- Bar with shock-resistant profile: 3.75m / 12.3ft
- Bar with shock-resistant profile and luminous cord: 3.75m / 12.3ft
- Bar with rack: 3.75m / 12.3ft
- Bar with luminous cord and rack: 3.75 / 12.3ft
- Bar with shock-resistant profile and mobile barrier support: 3.75m / 12.3ft
- Bar with shock-resistant profile, luminous cord and mobile barrier support: 3.75m / 12.3ft
- Bar with rack and mobile barrier support: 3.50m / 11.5ft
- Bar with luminous cord, rack and mobile barrier support: 3.50m / 11.5ft

#### DIMENSIONS



**NOTE:** G4040 Rising Arm Barrier also compatible with PS One System

## COMPACT

### PAY-ON-FOOT "BARCODE ONLY" SYSTEM

#### DESIGNED SPECIFICALLY FOR COST SENSITIVE PARKING APPLICATIONS

The Compact integrated pay-on-foot system enables centralised management of car parks with minimal investment and can provide a wide range of features and benefits.

The barcode technology deployed in Compact reduces the cost and complexity of the system by minimising the number of moving parts required compared with other systems which offers increased reliability.

The simplicity of the system does not mean a compromise in functionality; Compact can be used with options such as Automated Number Plate Recognition (ANPR), Voice over IP (VoIP) intercoms, security cameras & video, EMV chip & PIN cards, EMV contactless cards and many other technologies.

The Compact family consists of an entry terminal, paystation and exit terminal. The other elements required for a parking control system, such as barriers, are shared with the Elegance system range.



**PRICES FOR COMPACT ARE AVAILABLE UPON REQUEST:** every Compact project has to be analysed together with our sales team. Kindly let us have your project details so we can provide you with a specific quotation.

## COMPACT SYSTEM COMPONENTS

### AUTOMATIC PAY STATION

The Compact Automatic Pay Station makes it possible to expand based on actual needs, with options that increase its capacity to recycle coins and notes.

#### FEATURES

- Automatic calculation of parking fee based on reading of the barcode on an entry ticket and according to pre-set rates.
- Constant communication with the Central Unit (transmission of alarms, removal of cash boxes, transactions, collections, etc.).
- Payment methods accepted include discount cards, time tickets, excess time cards (season pass holders, conference tickets), multi car park user cards, etc.
- Payments accepted in 16 different types of coin.
- Coin recycling and optional return of change in one type of banknote.



For further information please visit  
[www.cameparkare.co.uk](http://www.cameparkare.co.uk)

### ENTRY TERMINAL

The Compact Entry Terminal is quick and simple to use and is based on a barcode system. Season pass holders generally use a smart card or other unique identifier, such as the licence plate of their vehicle.

#### FEATURES

- Configurable barcoded ticket issue, upon vehicle presence detection or by request (button).
- Permanent display on the terminal of the date, time and operating messages (can be configured and modified remotely).
- Reading and validation of proximity cards (season passes, conference tickets, discounts, etc.).
- Anti-pass back (APB) control of issued tickets, to prevent shared use of tickets and/or cards.
- Constant communication with the Central Unit (alarms, barrier opening, tickets issued, cards read, etc.).
- Control, detection and monitoring of irregular vehicle entry and exit sequences (ticket fraud).
- Visual and acoustic signal when ticket is issued.
- Operates on a network or as a standalone unit.



### EXIT TERMINAL

The Compact Exit Terminal has no moving parts. It identifies transient users by reading a barcoded ticket, and season pass holders by reading a pass card or ANPR identification.

#### FEATURES

- Reading and validation of barcoded tickets and proximity cards (season passes, conference tickets, discounts, etc.).
- Permanent display on the terminal of the date, time and operating messages (can be configured and modified remotely).
- Anti-pass back (APB) control of issued tickets, to prevent shared use of tickets and/or cards.
- Constant communication with the Central Unit (alarms, barrier opening, tickets issued, cards read, etc.).
- Detection of possible fraudulent tickets previously generated at the entrance to the car park as a result of an irregular entry/exit sequence.
- Visual and acoustic signal when a vehicle is present.
- Operates on a network or as a standalone unit.

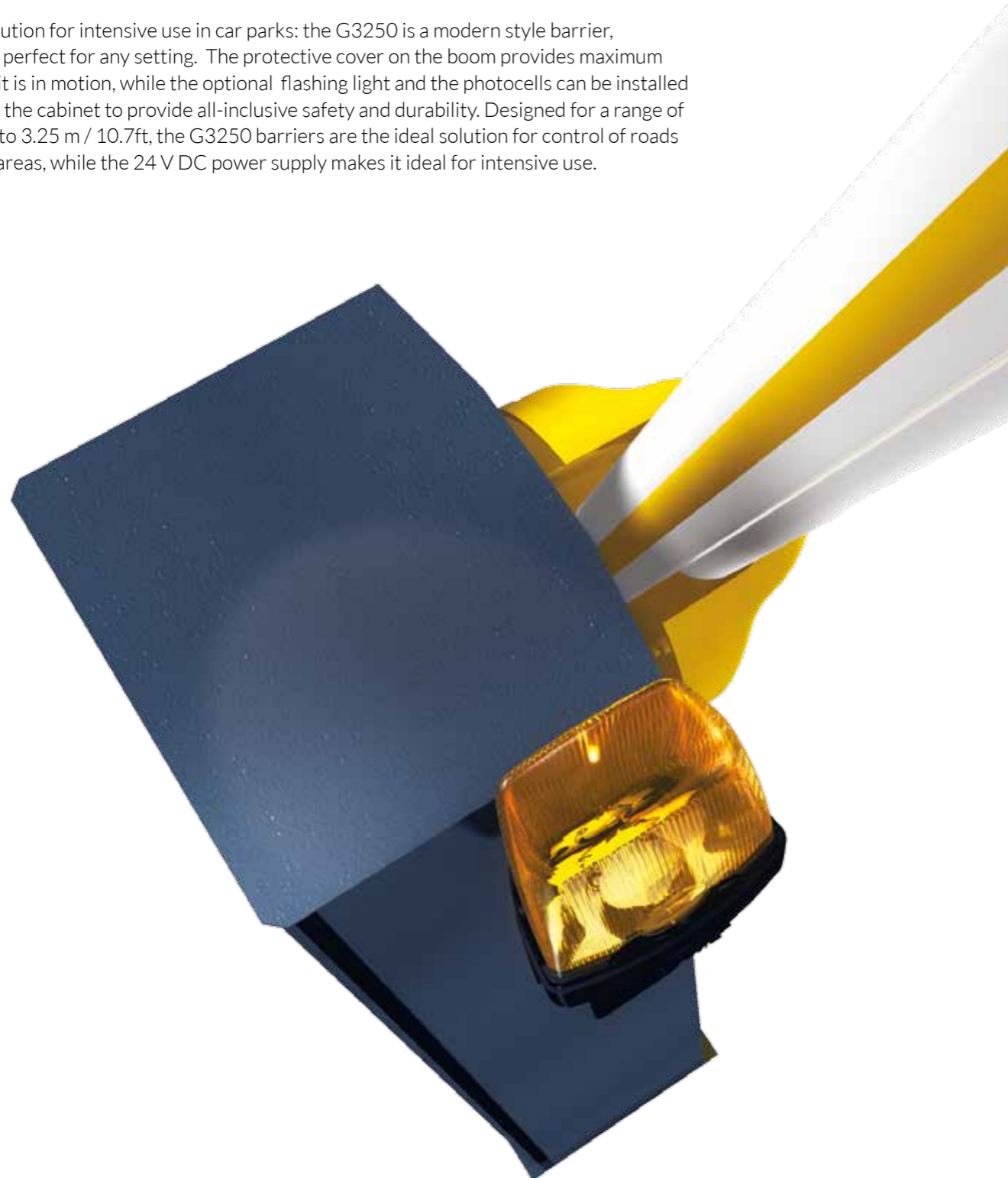




## COMPACT SYSTEM COMPONENTS

### G3250 RISING ARM BARRIER

A specific solution for intensive use in car parks: the G3250 is a modern style barrier, aesthetically perfect for any setting. The protective cover on the boom provides maximum safety while it is in motion, while the optional flashing light and the photocells can be installed directly onto the cabinet to provide all-inclusive safety and durability. Designed for a range of openings up to 3.25 m / 10.7ft, the G3250 barriers are the ideal solution for control of roads and parking areas, while the 24 V DC power supply makes it ideal for intensive use.



#### FEATURES

- The cabinet is made of 2mm-thick galvanised steel varnished with epoxy powders.
- The anchoring base is made of galvanised steel and has four clamps with securing nuts.
- The arm-attachment flange makes for quick and safe blocking of the arm.
- Inside there are: control panel, mechanical safety stops, endpoint assembly, balancing spring and irreversible gearmotor with die-cast aluminium case.
- The gearmotor features an endless screw based reduction system which is lubricated by permanent fluid grease with rotating parts on lubricated bearings.

#### OPTIONAL COMPONENTS

- Support for applying DELTA-I and DELTA-SI photocells;
- Adaptor for applying flashers of the Kiaro series via its relative 001KIAROS support.
- Card for connecting three 12 V - 7 Ah emergency batteries

For further information please visit [www.cameparkare.co.uk](http://www.cameparkare.co.uk)

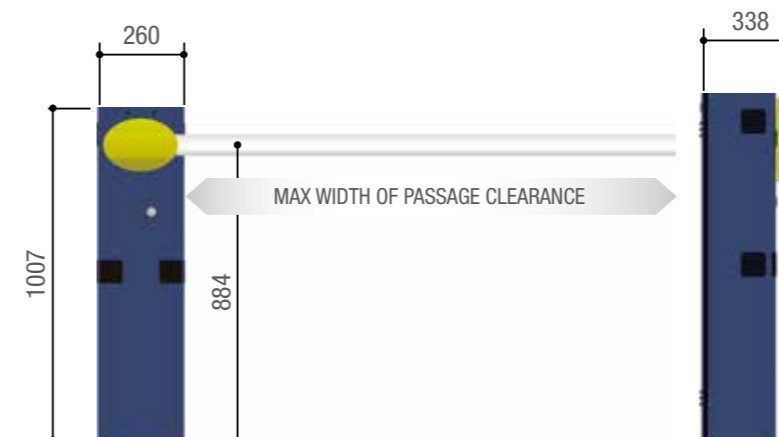
#### SPECIFICATIONS

- Protection Rating (IP): 54
- Motor Power Supply (V): 24 DC
- Maximum Torque (Nm): 200
- Operating Temperature (°C): - 20 / + 55
- Maximum Draw (A): 15 Max
- Opening time (s): 2 ÷ 6
- Duty Cycle (%): INTENSIVE SERVICE
- Power: 300 W
- Reduction ratio: 1/202
- Weight: 47 kg
- Insulation class: I

#### MAX OPENING CLEARANCE

- Bar with shock-resistant profile: 3.25m / 10.7ft
- Bar with shock-resistant profile and luminous cord: 3.25m / 10.7ft
- Bar with rack: 3.25m / 10.7ft
- Bar with luminous cord and rack: 3.25m / 10.7ft
- Bar with shock-resistant profile and mobile barrier support: 3.25m / 10.7ft
- Bar with shock-resistant profile, luminous cord and mobile barrier support: 3.25m / 10.7ft
- Bar with rack and mobile barrier support: 3.00m / 9.9ft
- Bar with luminous cord, rack and mobile barrier support: 3.00m / 9.9ft

#### DIMENSIONS (mm)



# PS ONE

## AUTOMATIC PARKING FACILITIES WITH BARCODE TICKETS

### FOR LARGE CUSTOMISED PARKING APPLICATIONS

State-of-the art, the future is already built into all our parking systems.

CAME presents PS ONE, the innovative parking solution with web-based technology for pay-to-park systems, from multi-storey car parks to reserved parking areas. Modular and versatile, simple and intuitive, PS ONE allows for maximum connectivity and system integration.

PS ONE: for easy, quick and safe parking facility management.

For further information please visit [www.cameparkare.co.uk](http://www.cameparkare.co.uk)



PRICES FOR PS ONE ARE AVAILABLE UPON REQUEST: every PS ONE project has to be analysed together with our sales team. Kindly let us have your project details so we can provide you with a specific quotation.





# BARCODE SOLUTION FOR MANAGING LARGE CUSTOMISED PARKING INSTALLATIONS

The result of CAME research, PS ONE exploits future technology, creating devices with a "native" ETHERNET interface. The advanced system management offers the opportunity to configure an unlimited number of peripherals such as automatic pay stations, entry and exit units, openings for season ticket holders, pedestrian readers and manned pay stations.

All these devices, connected to the ETHERNET network with universal TCP/IP protocol, are managed via a central server, which allows the connection of all the devices necessary. A modular solution, designed especially to satisfy the typical requirements of small, medium and large automated parking facilities.

Connections to the ETHERNET network make the PS ONE very versatile because it can use either optical fibres, WiFi connections or a combination of the two.



For further information please visit [www.cameparkare.co.uk](http://www.cameparkare.co.uk)

# MULTIPLE PAYMENT OPTIONS AVAILABLE

The PS ONE automatic pay stations offer all main methods of payment. Featuring latest generation displays, they are extremely simple and intuitive to use, they manage payments with all standard currency coins and banknotes. To optimize and reduce to a minimum tasks to be done by the operating staff, the automatic pay station can be fitted with coin and banknote change-unit, both of which are fully self-loading. They can also take credit or debit card payments from all different international circuits.

Customers may also exploit more innovative payment systems, such as: NFC (Near Field Communication) which provides the added benefit of paying by mobile phone or with proximity card.



## AUXILIARY PAYMENT SYSTEMS

Users can also pay online, in advance or later. Also, prepaid debit cards are now possible.

## TECHNICAL FEATURES

MODELS	IP	DESCRIPTION	DIMENSIONS (mm)	POWER SUPPLY (V AC - 50/60 Hz)	MATERIAL / COLOUR	MAX CURRENT DRAW (VA)	CURRENT DRAW AT REST (VA)	CURRENT DRAW (VA)
-	-	Automatic payment station	(see drawing)	230	Steel	750	150	450
-	-	Entry unit	(see drawing)	230	Steel	500	50	350
-	-	Exit unit	(see drawing)	230	Steel	500	50	350
PM101	-	Manual payment station	410 x 470	230	-	150	150	150
PSSRV	55	RED - GREEN traffic light.	265 x 635 x 430	-	Steel / Polymethacrylate	-	-	-
PSSRV2	55	Red / green LED traffic light	180 x 410 x 290	-	Steel / Polymethacrylate	-	-	-
PSINS	-	Sign	900 x 1,300 x 80	230	Aluminium / Polymethacrylate	20	10	10
TST01	-	Transponder card	from R700	-	-	-	-	-
PCT	-	Transponder keyfob	ISO7810-7813 (85 x 54)	-	ABS	-	-	-
TAG	-	Transponder TAG (bulb)	33 x 49 x 4	-	Glass	-	-	-

● 230 V AC



# PS ONE SYSTEM COMPONENTS

## PAYMENT STATIONS

Modular automatic payment station in high resistant painted steel. The management software enables complete customisation of the system from displaying the information on the monitor to managing customised tariffs for special periods and events.

### AUTOMATIC PAYMENT STATION

- Coin reader
- Note reader
- Self-charging note hopper
- Printer for receipts
- Video entry phone with VoIP technology
- Built-in device for reading and printing barcodes (printing lost ticket) and reading and writing ISO format proximity and microchip cards
- Sturdy boxes for collecting coins and notes with key

### OPTIONAL COMPONENTS

- Self-charging note change-giver
- Payment management with credit and debit cards
- Single denomination coin hopper
- 2D Image reader
- Note change-hopper (1 denomination)
- Card read/write device

### SPECIFICATIONS

- Height: 1717 mm
- Width: 750 mm
- Depth: 350 mm

### MANUAL PAYMENT STATION

- QR CODE 2D ticket
- 1D or 2D "print at home" ticket
- RFID card
- Handles coin and banknote payments for parking
- 1D BARCODE ticket, even for registered users
- Payment via POS cards, credit and debit cards is not standard, and is the responsibility of the management.



## ENTRY AND EXIT UNITS

These are based on a microprocessor with ARM architecture which is able to manage all the device peripherals. Communication with the central management server takes place via a connection to the ETHERNET network with a TCP/IP communications protocol. Each event is monitored in real time and sent to the management server. The mechanical structure is made from rust proofed galvanized, painted steel.

### ENTRY UNIT

- Fan fold ticket printer
- Proximity reader for season ticket cards
- TFT 5.7" display
- Ticket request button
- Detector for loop control
- Barrier management
- Built-in video entry phone with VoIP technology
- Fans and heaters for internal air temperature control
- Holder for 5000 fan fold tickets

### OPTIONAL COMPONENTS

- Image reader for 1D and 2D barcodes, also for mobile devices
- Video camera for memorising photos of the vehicle at the entrance
- Video camera and OCR module for reading number plates
- On-board device for barcode reading and printing
- Writing of ISO format proximity cards
- Writing of card with microchip

### SPECIFICATIONS

- Height: 1190 mm
- Width: 320 mm
- Depth: 392 mm

### EXIT UNIT

- Motorised ticket reader
- Proximity reader for season ticket cards
- TFT 5.7" display
- Detector for loop control
- Barrier management
- Built-in video entry phone with VoIP technology
- Fans and heaters for internal air temperature control

### OPTIONAL COMPONENTS

- Image reader for 1D and 2D barcodes, also for mobile devices
- Video cameras for memorising photos of the vehicle at the exit
- Video cameras and OCR module for reading number plates
- On-board device for barcode reading and printing
- Writing of ISO format proximity cards
- Writing of card with microchip

### SPECIFICATIONS

- Height: 1190 mm
- Width: 320 mm
- Depth: 392 mm



For further information please visit [www.cameparkare.co.uk](http://www.cameparkare.co.uk)

# OPTIMA VEHICLE GUIDANCE SYSTEM

## COMPATIBLE WITH ALL CAME PARKARE OFF STREET PAY-ON-FOOT SYSTEMS

The Optima automatic vehicle guidance system for car parks permits real-time car park occupancy control, which uses the information obtained to register and indicate the location and shortest path to available spaces to users.

Rapid detection and indication of free spaces means an immediate increase in car park vehicle turnover (and, therefore, profitability), as well as these additional benefits:

- Increased fire safety in the car park, thanks to the system's built-in temperature sensors.
- Centralised, independent set-up for each sensor, including height, adapting to the specific form of each car park.
- Optimisation of electricity consumption in the car park, thanks to automatic adjustment of the lighting depending on various configurable factors.
- More efficient use and distribution, thanks to the sequential occupancy system by zones (fully configurable).

All these features are based on establishing a true communications network that integrates the volumetric presence sensors and/or ultrasound vehicle traffic sensors, indicator signs, vehicle barriers, and a computerised central unit.



### SENSORS

- **Versatile** – High luminosity LEDs: 5,000 mcd (according to colour and angle of vision).
- **Flexible** – Signalling for special spaces in different colours.
- **Secure** – Environmental temperature control incorporated into each sensor for fire prevention.



### INDICATOR SIGNS

- **Versatile** – High luminosity LEDs: 350 mcd (according to colour and angle of vision).
- **Flexible** – Modular system permitting multiple combinations.
- **Reliable** – Instant update of count and signalling for free and occupied spaces.



### COMMUNICATIONS HUB

- **Easy to use** – Remote loading of version to all associated sensors and signs.
- **Versatile** – Supports up to 127 sensors and/or signs per hub.
- **Secure** – permanent monitoring of the status of associated sensors and signs.



### CENTRAL CONTROL AND MANAGEMENT UNIT

- **Easy to use** – Centralised control of all car park functions.
- **Reliable** – Automatic recording of all events in the car park in a viewable database.
- **Secure** – Securitised access to the control unit (user and password or operating card authentication).

# PRE BOOKING & ONLINE PAYMENTS

COMPATIBLE WITH ALL CAME PARKARE  
OFF STREET PAY ON FOOT SYSTEMS



Management and operation of the reservations system is centralised by a server. The website connects to the system's database to search for car parks available on certain dates, in the required country and city. Full survey required for Online services deployment.

# TEMPO

## ON STREET PAY & DISPLAY SYSTEM

Tempo integrates different technologies that make it possible to meet the needs of the different parties involved: the owner, the operator and the end user. It comprises the following elements:

- Tempo Pay & Display machine
- Surveillance system for Operators
- Central management software.
- Other added-value services, including integration with other systems

### SURVEILLANCE SYSTEM FOR OPERATORS & CITIES

This offers the ideal tool for controlling parking areas using smartphones, with a permanent connection to the mobile Communications Network.

The Operator can use the application software to verify the authorisation status of parked vehicles in an intuitive, user-friendly manner for the different usage formats (control of residents, forced rotation, etc.). Important utilities such as imposition of fines and sending of information on the status of machines are also made possible.



**PRICES FOR TEMPO ARE AVAILABLE UPON REQUEST:** every Tempo project has to be analysed together with our sales team. Kindly let us have your project details so we can provide you with a specific quotation.



## TEMPO SYSTEM COMPONENTS

The Tempo Pay & Display machine is the fruit of Parkare's wide-ranging experience as a leader in parking management and control systems.

It incorporates the features demanded by today's market and the very latest technology to give an effective response to future needs:

- Ergonomic, easy-to-use and stylish machines adapted to the urban environment.
- Robust stainless steel cabinet construction which is weather and vandal proof.
- Access points secured by electronic locking and real-time authorisation.
- Accepts multiple payment methods (coins, notes, EMV credit/debit cards, etc.).
- Can be personalised to suit the specific applications required by the operator.

### TECHNICAL DATA

- 2 mm thick stainless steel plate.
- Finished with oven dried polyester powder paint.
- Optional anti-graffiti coating layer.
- Anti-leverage doors 8/12 anchor points (top-maintenance/lower-cashbox).
- Polycarbonate display window - fire resistant and unbreakable.
- Capacitive anti-vandal keyboard.
- Fastenings between the body of the machine and pedestal accessible only internally.
- Modular design for easy replacements of components and testing

### SPECIFICATIONS

- Height: 1785 mm
- Width: 370 mm
- Depth: 290 mm



### OPERATING ENVIRONMENT

- Temperature: -10 °C to + 55 °C.
- Maximum relative humidity: 90% non-condensing.

### POWER

- Battery of 12V and 24Ah and integrated solar panel of 10 W

### PRINTER

- Printer with long life head.
- Standard ticket of 57 mm fixed-width and variable length between 95 and 124 mm.
- The ticket is sheltered from wind and rain during and after emission.
- The tickets are in rolls of 3,000 tickets.
- Issue ticket in 2.5 seconds.
- Detection of end of roll and low level ticket stock.

### CARD / TICKET READER

- Anti-vandal protection.
- EMV Reader (Europay, Mastercard, Visa) advanced as PCI -PTS 3.0 standard and software RedSys 4.0 protocol.
- Blacklists support, reloading, mixed payments and saving of all transactions.
- Proximity reader (contactless) payment card and subscribers, which meets the standards ISO 14443 A / B, PayPass™
- MasterCard, Visa and contactless and EMV cards PayWave™ (optional).
- Barcode reader (optional).

### COIN ACCEPTOR

- Programmable opening and closing shutter (vandal protection).
- Pre-paid system: return of the same coin in case of cancellation of the operation.
- Accepts up to 15 different currencies. Detection optical and magnetic devices detecting physical characteristics (string detection and anti-lead).

### COIN BOX

- Capacity approx. 5.5 litres.
- Collection by exchange method. The coin box is self-closing when removed.
- Configurable collection tickets (voucher or total).
- Query functions.
- Optional inclusion of a black box to control access to the collection.

### INFORMATION

- Hierarchical access levels to operational, management and financial data including configurations (e.g. tariffs)

### DISPLAYS

- Backlit Display Operation colour TFT 5.7 "QVGA (320 x 240).
- Display time graphic 48 x 16 mm. Displays the time in 4 digits of 9 mm height.
- Configurable 00-24 or 00-12 am/pm

### INDICATORS

- LED indicators showing status of the machine which can be viewed from a distance by operator.

### COMMUNICATIONS

- Bidirectional: downloading of lists, configurations and software; reception history, alarm and maintenance requests.
- Shipping operations and transactions in real time.
- Double GPRS configuration which enables the operator SIM change without modifying the initial configuration.
- Standard : GPRS (2.5G)
- Optional: CDMA (3G) and Bluetooth.
- Mobile data capture equipment (EMC) PSION.

### FUNCTIONS

- Capacity 8 MB of internal memory, 32 MB of Flash memory and SD card option for maintenance.
- Capacity 10 different rates of any type (table, annulment, resident, etc. . .), All streamable.
- Extensive configuration possibilities: schedules, holidays, fares, cards, hardware parameters, etc.
- Menus of operation for testing, initialization settings, queries, etc.
- Alarm history and intervention.

### SOFTWARE AVAILABLE

- Tempo Enterprise. Basic package management and configuration for any Windows platform.



# TEMPO ENTERPRISE SOFTWARE

## CLOUD BASED MANAGEMENT SOLUTION

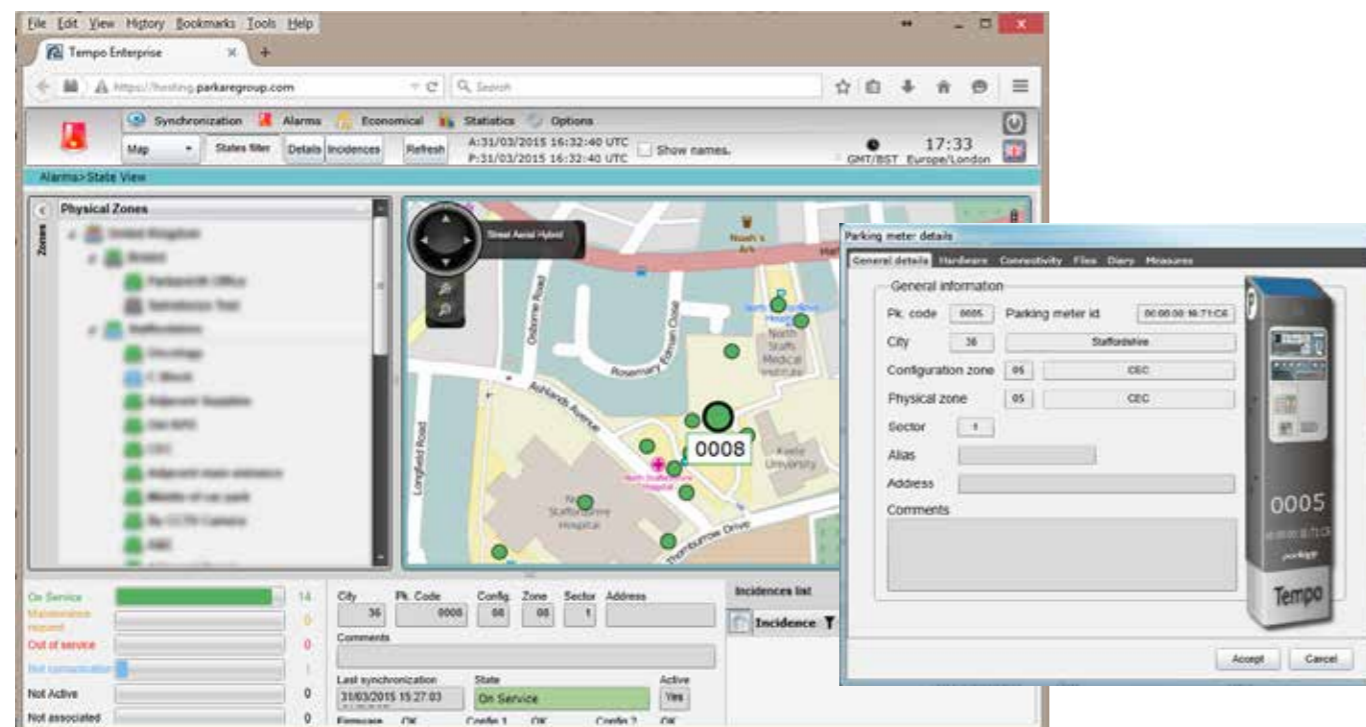
The management system uses suitably protected hosted software and web access that permits access and interaction from any computer, anywhere in the world, with the following salient points:

- View of controlled areas and status of Pay & Display machines as objects in the GIS of your choice: Open Streets, Google Maps, Yahoo! Maps or Bing Maps.
- Configuration of the functional parameters of the Pay & Display machines (schedules, tariffs, payment methods, etc.).
- Creation of reports and statistics (accounting, statistical, alarm or intervention lists, etc.).
- Monitoring of the operational status of each parking meter in real time, using any device (computer, PDA, Smartphone or tablet) that is connected to the internet.
- Real-time validation (online) of different transactions such as credit payments, fine cancellations, forced rotation.

### ADDED-VALUE SERVICES

The characteristic that sets Parkare apart in this industry is our ability to carry out tailor-made projects for integration with other elements of a city's transport infrastructure.

This capacity for integration means that a Pay & Display machine can be used, for example, as a service point for a city's bicycle transport program; it can be integrated with a system giving information regarding street occupancy; or it can be used as a city information post or emergency warning point.



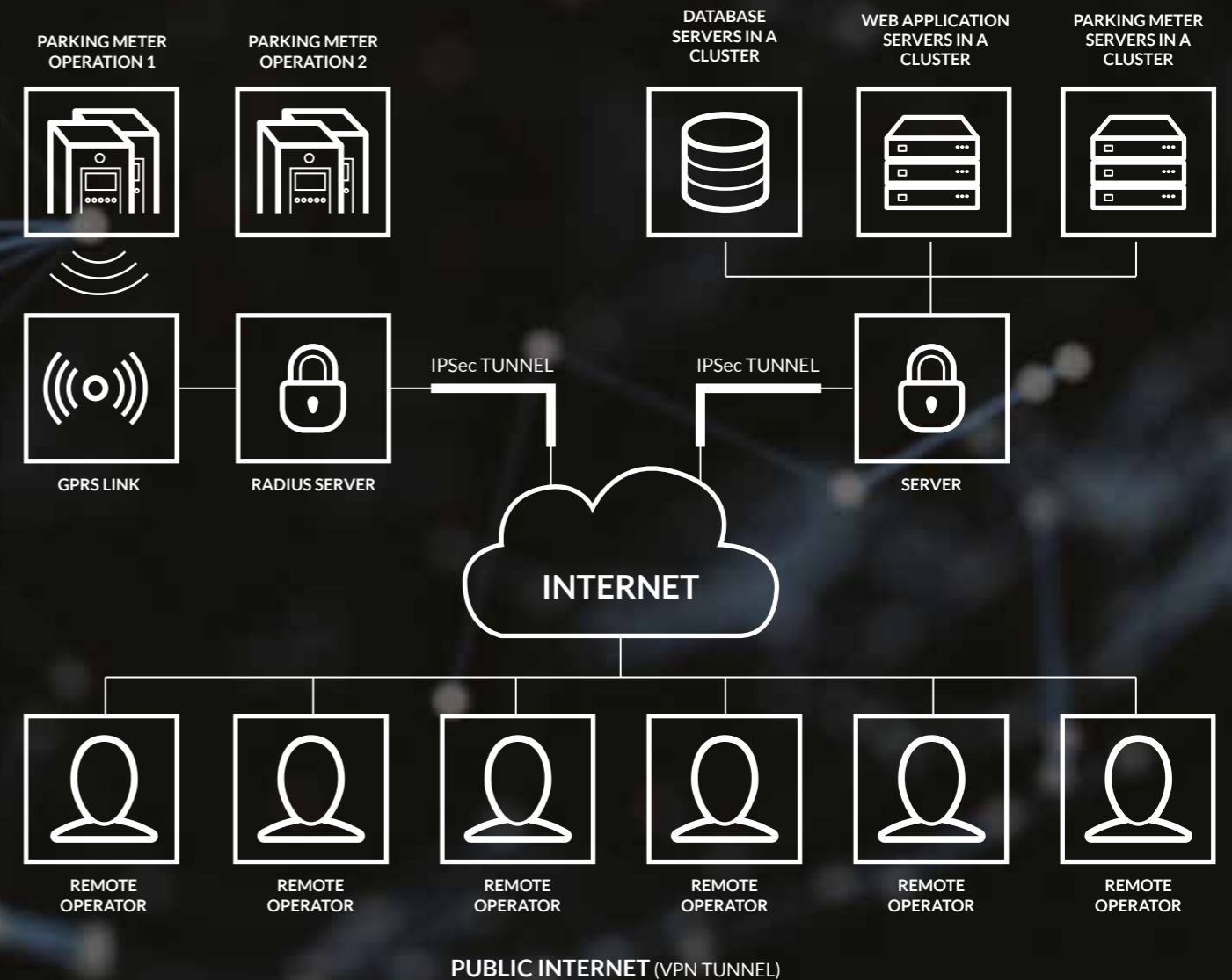
# TEMPO CLOUD SERVICES

## MULTIPLE BENEFITS, ONE PLATFORM

- Integrate the installation, management and maintenance of your business into a single supplier.
- Increase the profitability of your business by eliminating the infrastructure and maintenance costs.
- Greater efficiency for your pay and display operation, since you can focus your human and material resources exclusively on your business objectives.
- Reduction in management costs, thanks to the remote and centralised control of all your pay and display operations, regardless of their geographical location and time zone.
- Exclusive web features of the Tempo Enterprise management software:
  - Direct and secure access from any location with an Internet connection.
  - Administration of users with different roles and access levels.
  - Intuitive and interactive user interface.
  - System for locating pay and display machines on scrollable geographic maps, parallel management for different countries and time zones.
  - Non-differentiated management of active and non-active terminals, without losing configurations or historical data.

### MOBILE NETWORK OPERATOR

### TEMPO ENTERPRISE HOSTING SERVICES



# SERVICE & AFTERCARE

## SERVICE QUALITY COMMITMENT - AVAILABLE FOR ALL CAME PARKARE SYSTEMS

### WHY TRUST IN OUR SERVICES?

Your experience does not end once you have acquired one of our systems, we provide all our customers with peace of mind because you can rely on us to minimise your downtime, maximise productivity and protect your investment. We set the highest standards of service and that is why our customers continue to choose CAME Parkare for their service supplier.

CAME Parkare's nationwide support team offer a personal and flexible approach to customers' on going needs including tailor made comprehensive maintenance packages. Our multi-skilled team provide technical assistance and the timely deployment of skilled engineers directly to site, backed up by Technical Support Engineers.

### CUSTOMER SERVICE & TECHNICAL SUPPORT

Our contact center, provides a single contact point to resolve all of our customers' queries. We have experienced staff and technological resources to take care of any service query related to our products. The contact centre listens to our customers' so we can offer the best solution for their needs, as fast as possible.



### GUARANTEED RESPONSE TIMES

If your product needs hands-on technical support, one of our trained engineers will be on-site by the next business day or even sooner where the service level agreement dictates. All spare parts, labour, software and travelling expenses are included in our top level service package.



### SPARE PARTS

Parkare has a spare parts service where our customers can find a wide range and availability of original spare components to maintain the high performance of their installations and avoid any possible interruptions of the operation process.



### MAINTENANCE PLANS

We have a wide-range of services that are designed to meet your needs, no matter how big or small we provide a support solution which is right for you.

Your maintenance plan is dedicated to provide a specialised service to maintain the highest functionality of the products and the management systems of your car parks. The main objective is to optimize the yield and the productivity of the installations and offer a proper solution to all our customers, at a fixed subscription fee.

	included	included	included	included
insurance	included	10% off	25% off	50% off
1 Fr				
section	included	included	included	included
Rank 1 (12 consultations)	Rank 2 (30 consultations)	Rank 2 (52 consultations)	Rank 2 (52 consultations)	Rank 2 (52 consultations)
2 hours Franchise	OR 24h	OR 6H	OR 6H	OR 6H
4	10	75	75	75
1	1	2	2	2

## CAME PARKARE UK - PARKARE UK LTD

### HEAD OFFICE

Unit 108  
Longmead Road  
Emerald Park East  
Emersons Green  
Bristol  
BS16 7FG

### LONDON OFFICE

Liberta House  
Maxted Road  
Maylands Ind. Est.  
Hemel Hempstead  
Hertfordshire  
HP2 7DX

### NOTTINGHAM OFFICE

Unit 3  
Orchard Park Ind. Est.  
Town Street  
Sandiacre  
Nottingham  
NG10 5BP

### MANCHESTER OFFICE

Unit 14  
Latham Close  
Bredbury Park Ind. Est.  
Bredbury  
Stockport  
SK6 2SD

**+44 (0)844 371 7072**  
**[sales@parkaregroup.co.uk](mailto:sales@parkaregroup.co.uk)**  
**[www.cameparkare.co.uk](http://www.cameparkare.co.uk)**